

# Toys and Homes

## On The Day Pack

In this pack you will find:

### **'Before you visit' guide**

Brief notes about what to expect and how to prepare for your visit

### **During and after visit information**

Brief notes for on the day expectations and feedback

### **Instruction sheets for the teacher-led craft activity session**

These instructions outline the teacher-led craft activity your students will be partaking in

### **Pupil's gallery activity trail**

Gallery trail information

### **Map of Hollytrees Museum**

A handy map to orientate yourself and find your way to all the different parts of the museum

# 'Before you visit' guide

## Session Summary

Your class will enjoy a whole day at the Museum split into 2 parts;

### Exploring dolls house and toys

The children will learn about the history of Hollytrees as a house and who lived there, they will enjoy dressing up in period costume while they explore our amazing Hollytrees dolls house with the Museum Learning Assistant. There will then be time to learn about toys from the past, what they were made from and how they worked – this will be learning through play in small groups with your school adults and the Museum Learning Assistant will be on hand to help and answer any questions.

### Craft and trail

This is teacher-led time which you can split as you wish between a craft activity making a Victorian-inspired toy, and time to take a good look around our childhood gallery using the gallery trail sheet.

## Logistical Preparation

- If you have any additional learning or access needs that would be useful for us to be aware of, please contact our business team [museums@colchester.gov.uk](mailto:museums@colchester.gov.uk). Our learning manager can also be reached on [lynette.allison@colchester.gov.uk](mailto:lynette.allison@colchester.gov.uk)
- If you have any neuro-diverse pupils, they may benefit from the visual story we have on our museum website [HERE](#)—scroll down just over halfway to where it says 'autism'. We also have twiddle muffs and ear defenders if needed.
- Children will have somewhere to store their coats and don't need to carry them, could you please ask them to bring only a **small** lunch box/bag rather than a whole backpack as storage space is limited.

## During and after visit information

### During your visit

You will be provided with a timetable before the day which will make the format of the day clear – including when you are breaking for lunch.

We would appreciate it if you let us know if there are any accidents/ breakages of the toys when you are playing or if you find anything is missing. We spend thousands of pounds a year replacing broken/ spoiled/ missing objects so your cooperation in keeping things in good condition for other users is very much appreciated.

### After your visit

We are always trying to improve our school sessions and will ask you to complete a short evaluation form. This will be sent to you via the admin email address used for booking, or to you directly if your email address was on the booking form. We are keen to hear what your pupils thought of their experience too so if you have time to write us some letters it is always welcome!

## Instruction sheet for teacher-led craft activity

During your teacher-led time you will have a craft activity available for you in the Education Room. You should have all the resources you need already set out for you, but if you find you don't have enough, just ask a museum assistant who will be happy to help.

You will be making a Victorian-style cup and ball game – you may find it helpful to watch this video of **something similar** being made

[Kids Crafts- Make a Cup and Ball Game - YouTube](#)

In the video it is suggested to push the string through the bottom of the cup through a hole, but we suggest to simply tape it to the bottom to avoid having to poke a hole with a sharp object.

You will need (these will be set out for you);

Paper cup

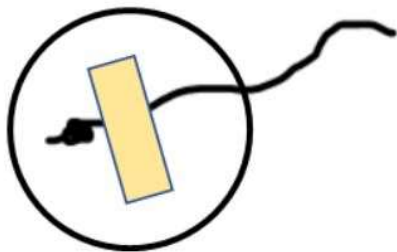
Paper ball

String

Tape

Coloured pens/pencils/crayons

- 1) Tie a knot in one end of the string and Sellotape it to the bottom of the cup



- 2) Either Sellotape the paper ball to the other end of the string or tie the string around the ball
- 3) Decorate your cup
- 4) Play!!

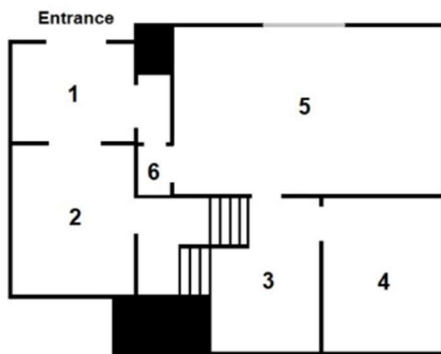
## Pupil's gallery activity trail

Your gallery trail can also be completed during the teacher-led time – it is up to you how you want to split this time slot between craft and trail.

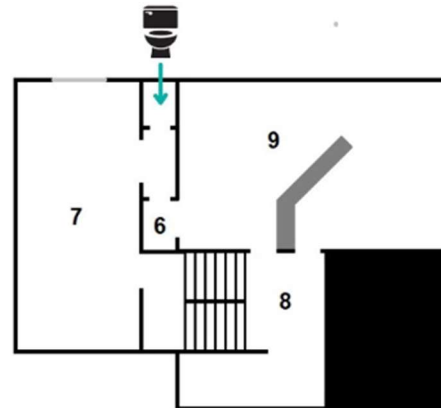
The trail / activity sheet can be found on the website and viewed and downloaded in advance [HERE](#). But we will also provide printed copies in the education room for you to use.

# Map of Hollytrees Museum

Ground Floor + Upper Ground Floor



First Floor + Upper First Floor



You will be using the following rooms

5 – the garden room

7 - running the home gallery

9 - the childhood gallery.

The education room is on the second floor above the running the home gallery (7) and has its own separate toilet, you can also use the toilet next to the running the home gallery.